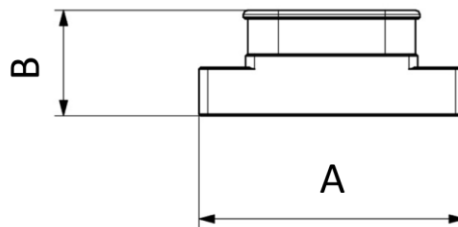


EC-BS-Backshell Series

Features

- Multiple entry size
- Available for all EC-BS shells size 9 to 100 pin
- Type of Backshell: Straight 180 Degree
- Aluminum alloy shell finish with chromate or nickel plating
- Temperature: -10 to 85°C



Ordering code	Dimension A (mm)	Dimension B (mm)	Type (Deg)
EC-BS-9TE-CAD	20±0.5	12±0.5	180
EC-BS-15TE-CAD	24±0.5	12±0.5	180
EC-BS-25TE-CAD	30±0.5	12±0.5	180

Ordering Information

